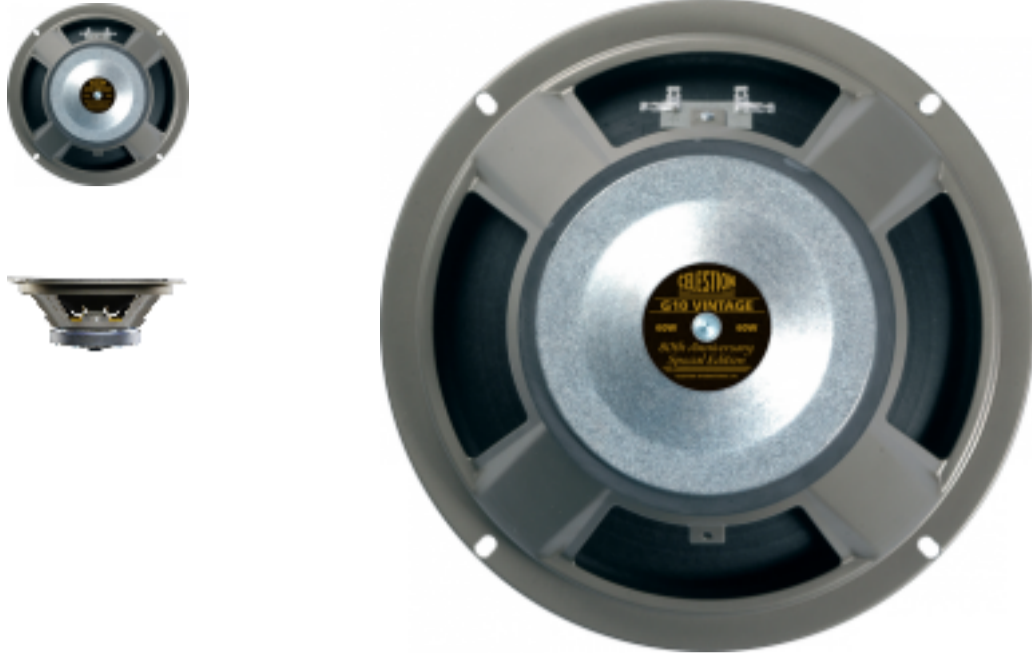


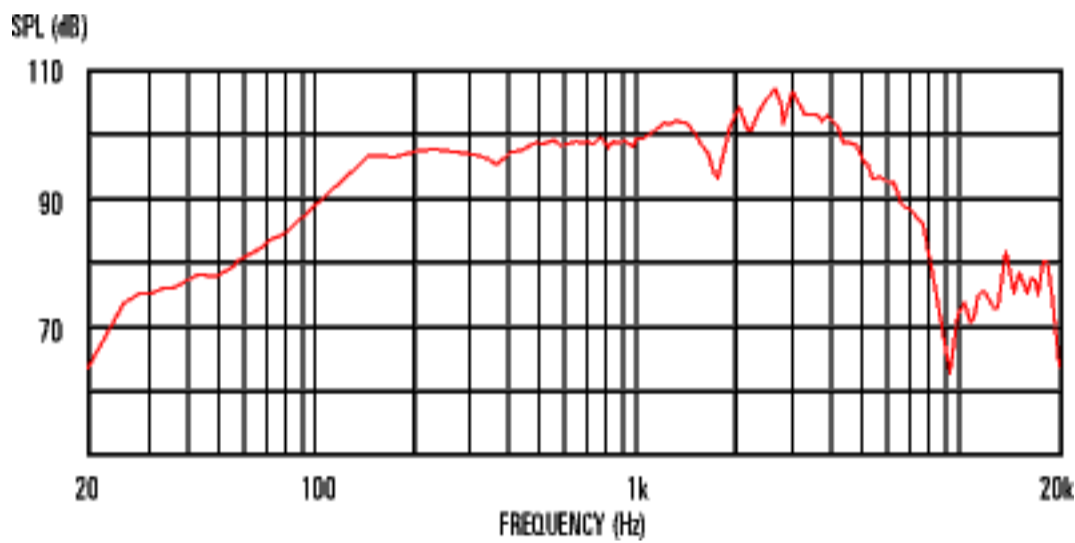
### G10 Vintage



A worthy successor to the Vintage 10, the G10 Vintage is a 10" speaker with bags of attitude. Using powerful ceramic magnets and the same voice coil design as the Vintage 30, the G10 packs an impressive punch with its 60W power handling.

With the fast response of a 10" but with the strong and creamy vocal tones of a 12", the G10 is the ideal choice to add depth to hollow-sounding amps, or for players who want to get humbucker-type girth from single-coils. Can be used singly to add vocal warmth to small valve combos, or in quartets for a weightier but still lively attack.

#### 8 Frequency Response



#### General Specifications

Chassis type	Pressed steel
DC resistance, Re	Available 7.47 or 12.33
Frequency range	100-5500Hz
Magnet type	Ceramic
Magnet weight	31oz, 0.88kg
Nominal diameter	10", 254mm
Nominal impedance	Available 8 or 16
Power rating	60Wrms
Resonance frequency, Fs	115Hz
Sensitivity	97dB
Voice coil diameter	1.75", 44.5mm
Voice coil material	Roundcopper

#### Mounting Information

Cut-out diameter	9.0", 229mm
Diameter	10.1", 256mm
Magnet structure diameter	5.3", 134mm
Mounting slot dimensions	0.2 x 0.3", 6 x 8mm
Mounting slot PCD	9.6", 245mm
Number of mounting slots	4
Overall depth	4.1", 104mm
Unit weight	5.3lb, 2.4kg